

X-Trade Brokers

Strategies for XTB Expert Builder

Michał Zabielski
2010-09-25

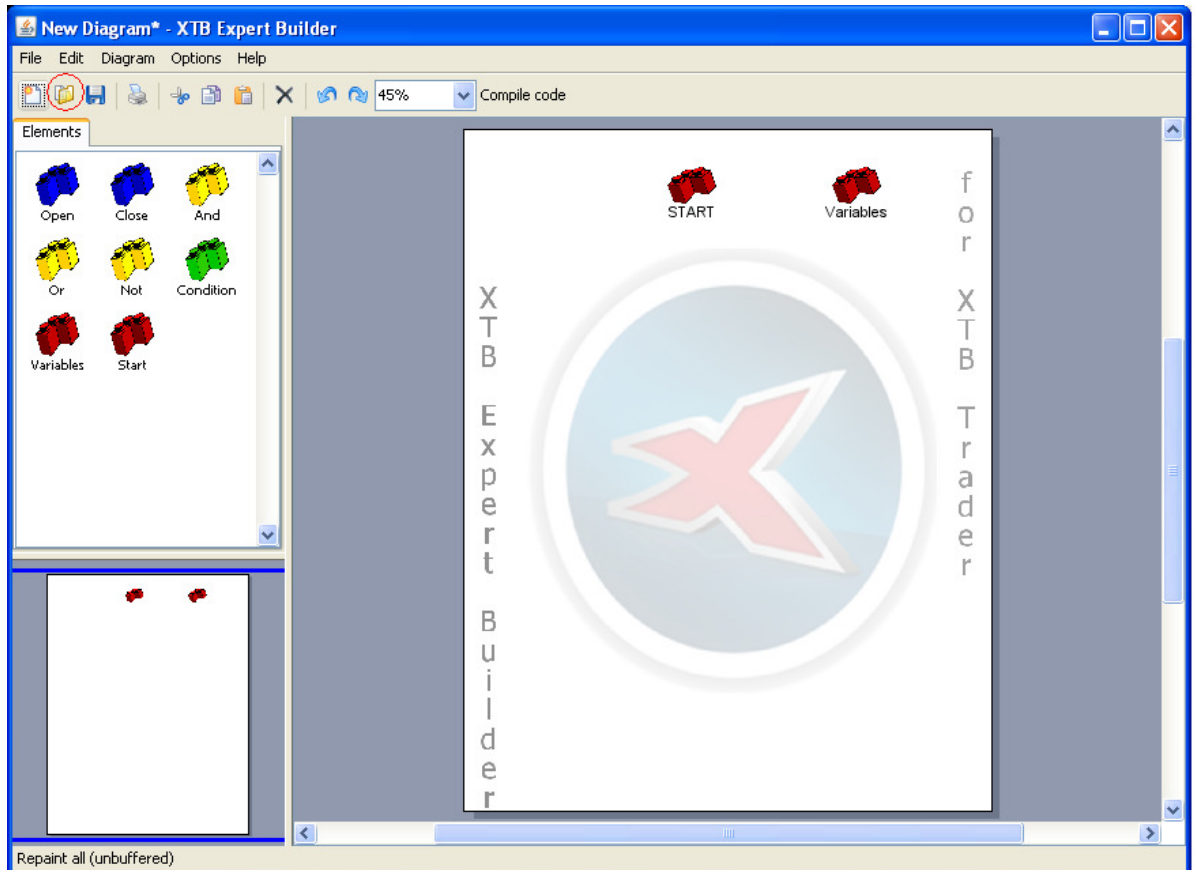
Table of contents

Opening example strategies.....	4
Strategies.....	8
Moving Average (MA.xtb)	8
Moving Average (MA_Cross.xtb).....	8
RSI (RSI_positions_in_canal.xtb)	8
RSI with MA (RSI_plus_MA.xtb)	8
MACD(MACD.xtb).....	8
MACD Zero Line(MACD_zero_line.xtb).....	9
ADX(ADX.xtb).....	9
Bollinger Bands1(Bollinger1.xtb).....	9
Bollinger Bands2 (Bollinger2.xtb).....	9
CCI with MA(CCI_plus_MA_ver1.xtb).....	9
CCI with MA(CCI_plus_MA_ver2.xtb).....	9
Ichimoku1(Ichimoku_cloud_closes.xtb).....	9
Ichimoku2(Ichimoku_tenkan_kijun_intersection_closes.xtb)	10
Parabolic SAR(Parabolic SAR.xtb)	10
Parabolic SAR(Parabolic SAR2.xtb)	10
Stochastic(Stochastic_classic_ver1.xtb)	10
Stochastic(Stochastic_classic_ver2.xtb)	10
Stochastic(Stochastic_plus_MA_ver1.xtb).....	10
Stochastic with MA(Stochastic_plus_MA_ver2.xtb)	10
Stochastic with MA(Stochastic_plus_MA_ver3.xtb)	11

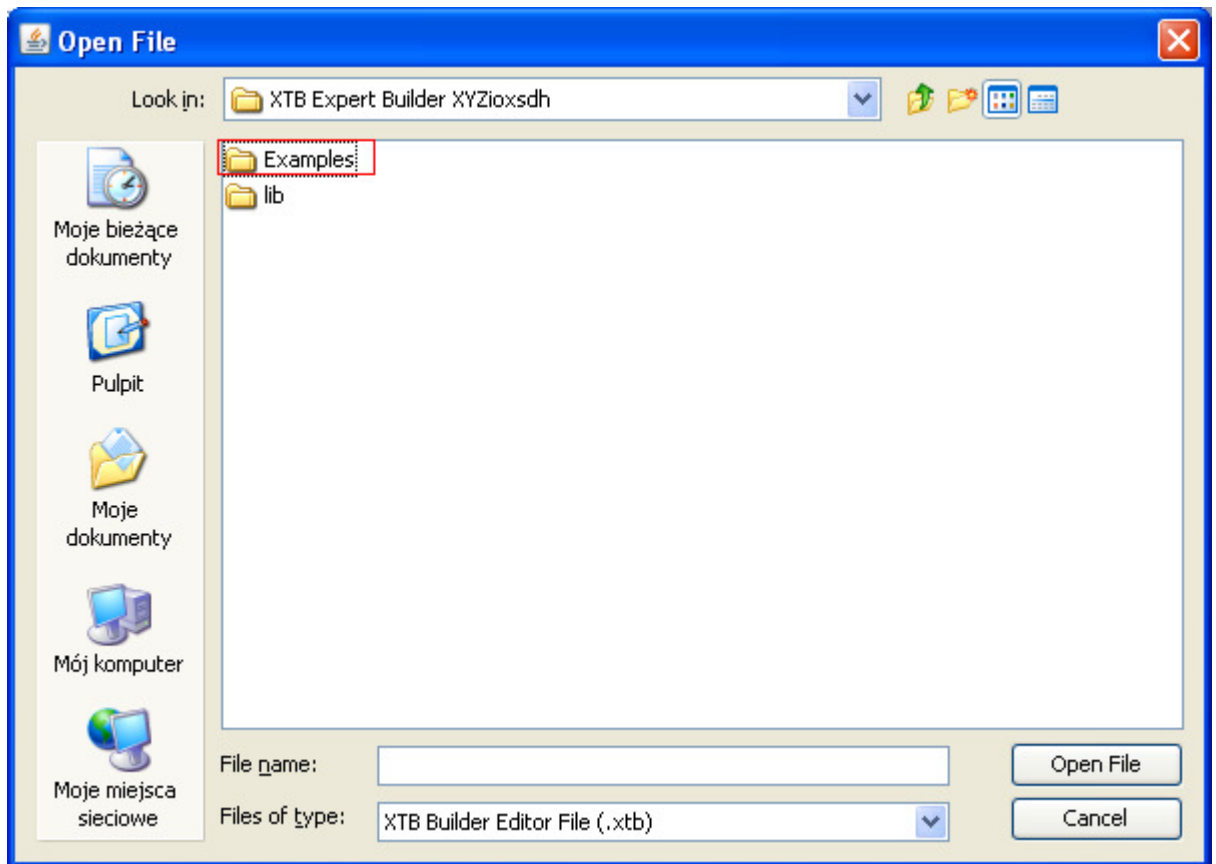
Opening example strategies

Examples folder should appear in XTB Expert Builder folder after successful installation Strategies Pack. Using the Strategies Pack very simple:

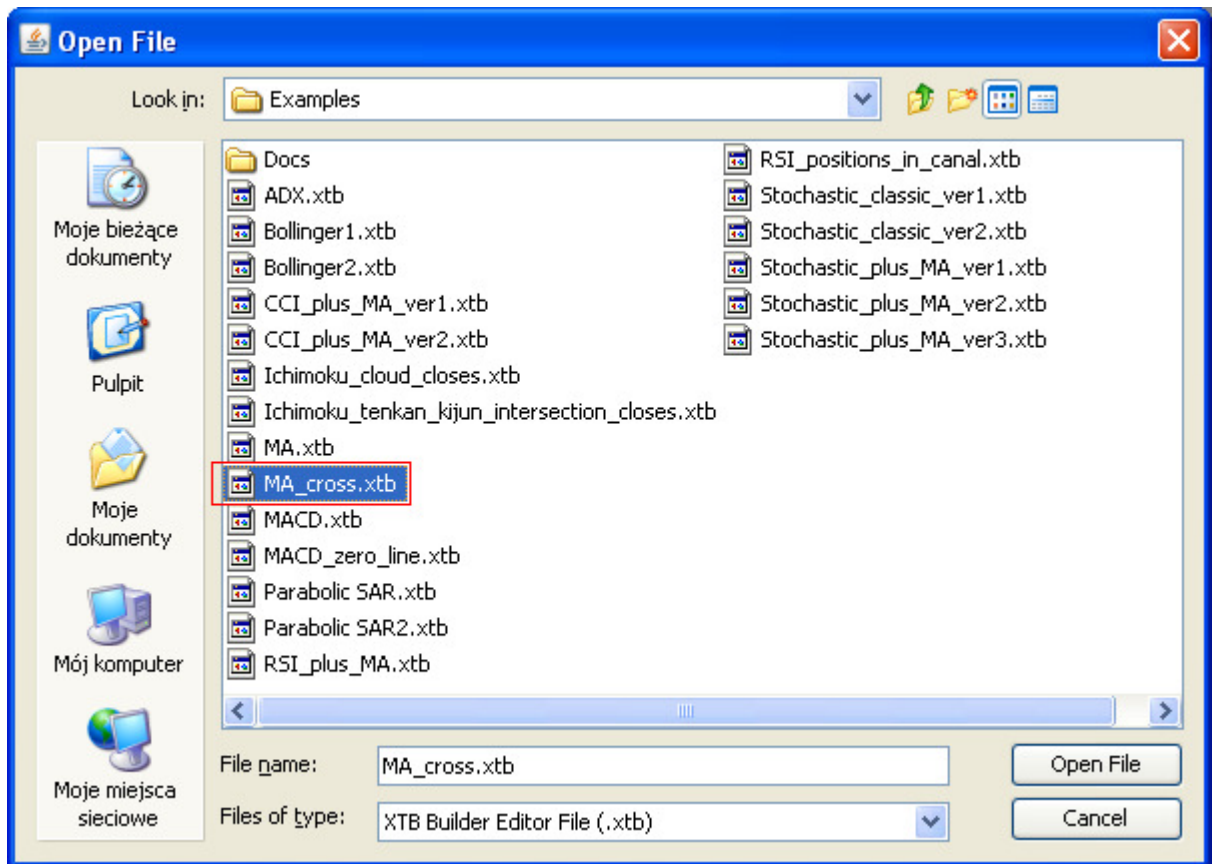
1. Run the XTB Expert Builder.
2. Click Open button from Toolbar or File Menu.



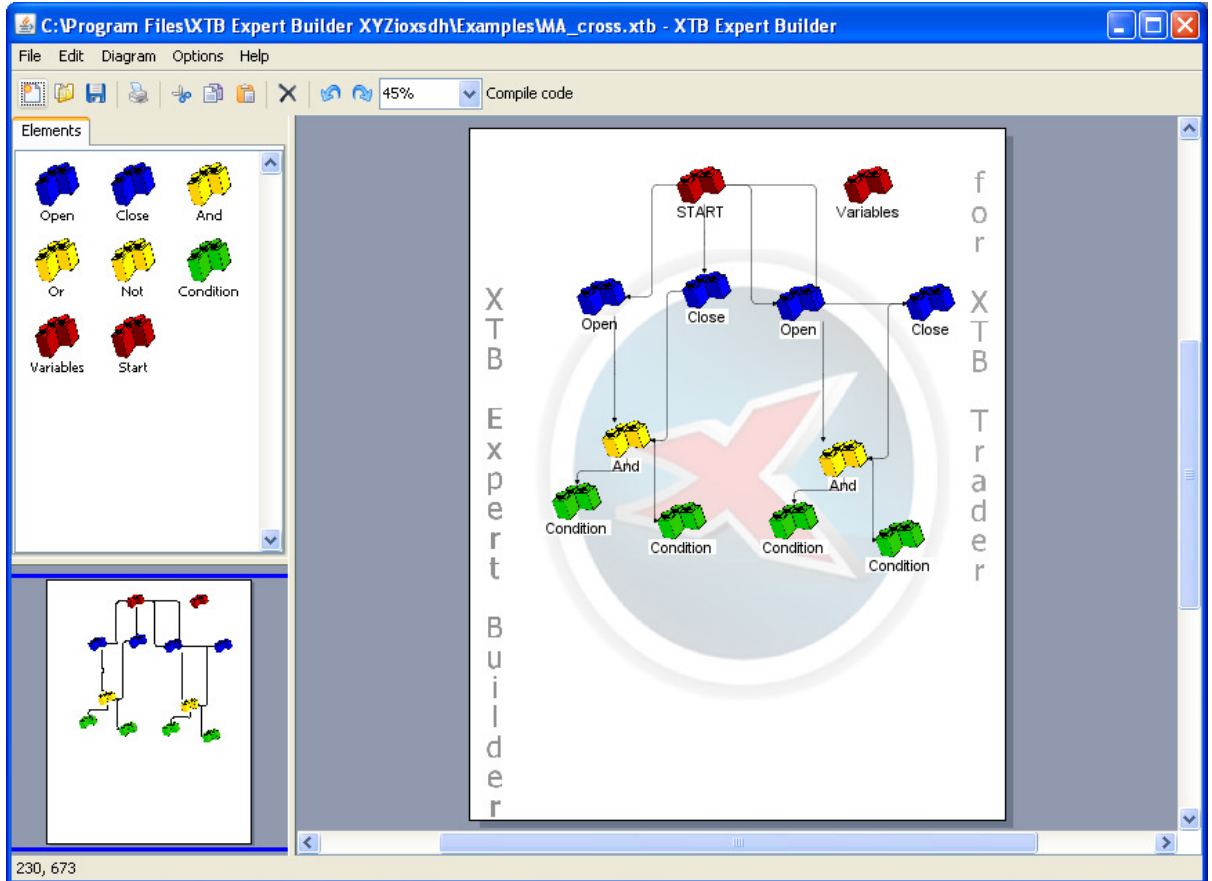
3. Open the Examples folder



4. In order to open to open the strategy you are interested in, just double-click the file with the strategy



5. The strategy is ready to be changed and compiled.



230, 673

Strategies

Moving Average (MA.xtb)

Strategy very similar to that available on XTB Trader by default. Buy signal when the close price cross the Moving Average from down-to-up and after that close price is above Moving Average for two Bars. Sell signal when the close price cross the Moving Average from up-to-down and after that close price is below Moving Average for two Bars. Position is closed when Close price cross Moving Average. Stop Loss and Take Profit values can be set.

Moving Average (MA_Cross.xtb)

Strategy where crossing two moving averages is the signal for Buy or Sell. When the faster moving average crosses the slower from down-to-up, then it is Buy signal. Otherwise it's Sell signal. Stop Loss and Take Profit values can be set.

RSI (RSI_positions_in_canal.xtb)

Strategy for coming backs of RSI indicator from >70 and <30 levels. When the indicator values crosses the value 30 (which can be set differently from external variables) from down-to-up, then Buy position is opened. When the indicator values crosses the value 70 (which can be set differently from external variables) from up-to-down, then Sell position is opened. When RSI indicator drops under the value of 30 (Lower Line), then the Sell position is closed. When RSI indicator reaches level higher than 70 (HigherLine), then the Buy position is closed. StopLoss and TakeProfit are optional.

RSI with MA (RSI_plus_MA.xtb)

Transactions are made only in the direction of the trend which is calculated from the slope of the 50 period Simple Moving Average. Strategy for coming backs of RSI indicator from >70 and <30 levels. When the indicator values crosses the value 30 (which can be set differently from external variables) from down-to-up and Simple Moving Average is up-sloped, then Buy position is opened. When the indicator values crosses the value 70 (which can be set differently from external variables) from up-to-down and Simple Moving Average becomes down-sloped, then Sell position is opened. When RSI indicator drops under the value of 30 (Lower Line) or Simple Moving Average becomes up-sloped, then the Sell position is closed. When RSI indicator reaches level higher than 70 (HigherLine) or Simple Moving Average is down-sloped, then the Buy position is closed. StopLoss and TakeProfit are optional.

MACD(MACD.xtb)

Buy signals are taken into account only when they appear under MACD zero line. Sell signals are taken into account only when they appear above MACD zero line. Buy signal is defined as crossing signal line by main line of MACD from down-to-up. Sell signal is opposite, but happens only when the MACD value is above zero line. Closing signals are opposite to open signals, but not contains zero line condition.

MACD Zero Line(MACD_zero_line.xtb)

Buy signal is defined as crossing zero line by main line of MACD from down-to-up. Sell signal is opposite. Closing signals are opposite to open signals.

ADX(ADX.xtb)

Opening of the positions (buy/sell) are happening when Main Line of indicator crosses from down-to-up level 20. Additionally, buy signal is determined by the fact that +DI line is above -DI line. When the lines are in the other order (+DI is below -DI) then sell order open is send.

There are two situations when positions are closed:

1. When Indicator Main Line went to level above 40 and then back under the level 40.
2. When crossing of the +DI and -DI lines occur.

Bollinger Bands1(Bollinger1.xtb)

Buy Signal appears when Close price comes below Lower indicator Line and then comes back to the canal. Sell Signal appears when Close price comes above upper indicator Line and then comes back to the canal. Positions are closed when the Close price cross the opposite indicator line (for buy orders it will be upper line, for sell order it will be lower line)

Bollinger Bands2 (Bollinger2.xtb)

Buy Signal appears when Close price comes below Lower indicator Line and then comes back to the canal. Sell Signal appears when Close price comes above upper indicator Line and then comes back to the canal. Positions are closed only by Stop loss and Take profit set in points in the strategy.

CCI with MA(CCI_plus_MA_ver1.xtb)

Transactions are made only in the direction of the trend which is calculated from the slope of the 50 period Simple Moving Average. Buy orders are opened when the trend have positive slope and CCI indicator comes from <-100 level to >-100 level. Sell orders are opened when the trend have negative slope and CCI indicator comes from >100 level to <100 level. Orders are closed only by Stop loss and Take profit set in points in the strategy.

CCI with MA(CCI_plus_MA_ver2.xtb)

Transactions are made only in the direction of the trend which is calculated from the slope of the 50 period Simple Moving Average. Buy orders are opened when the trend have positive slope and CCI indicator comes from <-100 level to >-100 level. Sell orders are opened when the trend have negative slope and CCI indicator comes from >100 level to <100 level. Orders are closed when the Simple Moving Average reverse the slope.

Ichimoku1(Ichimoku_cloud_closes.xtb)

Buy orders are opened when the close price leaves the cloud crossing the upper cloud line and the Tenkan Sen line is above the Kijun Sen line. Sell orders are opened when the close price leaves the cloud crossing the lower cloud line and the Tenkan Sen line is below the Kijun Sen line. Orders are closed, when the close price came back into the cloud.

Ichimoku2(Ichimoku_tenkan_kijun_intersection_closes.xtb)

Buy orders are opened when the close price leaves the cloud intersecting the upper cloud line and the Tenkan Sen line is above the Kijun Sen line. Sell orders are opened when the close price leaves the cloud crossing the lower cloud line and the Tenkan Sen line is below the Kijun Sen line. Orders are closed, when the Tenkan Sen line intersects Kijun Sen line.

Parabolic SAR(Parabolic SAR.xtb)

Buy orders are opened when the point of Parabolic SAR changes the relative position to the Bar from above the Bar to below. Sell orders are opened when the point of Parabolic SAR changes the relative position to the Bar from below the Bar to above. Orders are closed when the opposite order should be opened.

Parabolic SAR(Parabolic SAR2.xtb)

Buy orders are opened when the point of Parabolic SAR changes the relative position to the Bar from above the Bar to below. Sell orders are opened when the point of Parabolic SAR changes the relative position to the Bar from below the Bar to above. Additionally, for opening order the indicator have to hold the relative position to the Bar for 2 periods. Orders are closed when the indicator change relative position to the Bar.

Stochastic(Stochastic_classic_ver1.xtb)

Buy orders are opened when the main line of the indicator is below Lower Level (20) and Main Line intersects the Signal Line from down-to-up. Sell orders are opened when the main line of the indicator is above Higher Level (80) and Main Line intersects the Signal Line from up-to-down. Orders are closed when the opposite order should be opened.

Stochastic(Stochastic_classic_ver2.xtb)

Buy orders are opened when the main line of the indicator is below Lower Level (20) and Main Line intersects the Signal Line from down-to-up. Sell orders are opened when the main line of the indicator is above Higher Level (80) and Main Line intersects the Signal Line from up-to-down. Orders are closed when the Main Line intersects Signal Line (level is not taken in account for closing orders).

Stochastic(Stochastic_plus_MA_ver1.xtb)

Transactions are made only in the direction of the trend which is calculated from the slope of the 100 period Simple Moving Average. Buy orders are opened when the trend is upward and main line of the indicator is below Lower Level (20) and Main Line intersects the Signal Line from down-to-up. Sell orders are opened when the trend is downward and the main line of the indicator is above Higher Level (80) and Main Line intersects the Signal Line from up-to-down. Orders are closed when the opposite order should be opened.

Stochastic with MA(Stochastic_plus_MA_ver2.xtb)

Transactions are made only in the direction of the trend which is calculated from the slope of the 100 period Simple Moving Average. Buy orders are opened when the trend is upward and main line of

the indicator is below Lower Level (20) and Main Line intersects the Signal Line from down-to-up. Sell orders are opened when the trend is downward and the main line of the indicator is above Higher Level (80) and Main Line intersects the Signal Line from up-to-down. Orders are closed when the Main Line intersects Signal Line (level is not taken in account for closing orders) or the Simple Moving Average changed the slope.

Stochastic with MA(Stochastic_plus_MA_ver3.xtb)

Transactions are made only in the direction of the trend which is calculated from the slope of the 100 period Simple Moving Average. Buy orders are opened when the trend is upward and main line of the indicator is below Lower Level (20) and Main Line intersects the Signal Line from down-to-up. Sell orders are opened when the trend is downward and the main line of the indicator is above Higher Level (80) and Main Line intersects the Signal Line from up-to-down. Orders are closed when the Simple Moving Average has changed the slope.